



**100% Guaranteed ~ Built to Last**

**CRUSH**



A new **visual concept** that describes the Leonardo products - 100% Guaranteed.

An **impossible** figure that overcomes the unstable, changing and inadvertent elements of reality to become an **absolute and eternal material**.

A figure which, like Leonardo products, positions itself **beyond time and physical space**.

The Leonardo ceramic surfaces - 100% Guaranteed, are achieved exclusively with **a mix of quality raw materials**, and with no need for the intervention of digital decoration.

This production technology makes the surfaces **truly unique**, creating a perfect harmony between performance and contemporary aesthetic yield.

Furthermore, it offers floors and cladding an exceptional stability and durability no matter where it is used, well **beyond the limits of imagination**.

**BUILT TO LAST.**



**100% Guaranteed  
Built to Last**

Un nuovo **visual concept** che descrive i prodotti Leonardo - 100% Garantito.

Una figura **impossibile**, che supera gli elementi instabili, mutevoli e accidentali della realtà per diventare **materia eterna, assoluta**.

Una figura che, come i prodotti Leonardo, si colloca **oltre il tempo e oltre lo spazio fisico**.

Le superfici ceramiche Leonardo - 100% Garantito sono ottenute esclusivamente con la **miscelazione di materie prime nobili**, senza alcun intervento di decorazione digitale.

Questa tecnologia produttiva rende le superfici **realmente uniche**, in perfetto equilibrio tra prestazione e resa estetica contemporanea.

Inoltre, assicura a pavimenti e rivestimenti una stabilità e una durevolezza straordinarie in qualsiasi contesto d'uso, **oltre i limiti del possibile**.

**BUILT TO LAST.**

# THE RANGE

La gamma

**GB**

**CRUSH**  
greige

**W**

**CRUSH**  
white

**G**

**CRUSH**  
grey

**DG**

**CRUSH**  
dark grey

CRUSH BY LEONARDO

# RIGOROUS APPROACH

Approccio rigoroso

Crush's new ceramic proposal applies Leonardo technology to the stylistic values of Brutalist architecture that emerged in the 1950s in the UK and combines simplicity with a design precision offering strong expressiveness and the intensity of natural texture.

Aesthetic and decorative ostentation makes way for practicality and the power of shapes.

Crush places the essence of the natural texture and its primary elements at the heart of the design approach: light, expressive characterisation, and volumes.

A deliberately rough surface, like visual concrete, ideal for environments that seek out the mark of an authentic, contemporary, and essential style in the charm of industrial material.

La nuova proposta in ceramica di Crush applica la tecnologia di Leonardo ai valori stilistici del Brutalismo, la corrente architettonica nata negli anni '50 in Inghilterra che unisce semplicità e rigore progettuale a una forte espressività e potenza materica.

L'ostentazione estetica e decorativa cede il passo alla funzionalità e alla forza delle forme. Crush porta al centro dell'approccio progettuale l'essenza stessa della materia e dei suoi elementi primari: la luce, la caratterizzazione espressiva, i volumi.

Una superficie volutamente grezza, come il cemento a vista, ideale per ambienti che ricercano nel fascino del materiale industriale il segno di uno stile autentico, contemporaneo ed essenziale.

## CRUSH

The term *Crush* literally means to crush or smash. A concept that perfectly describes the technological and industrial process of Leonardo products, obtained with a mix of raw materials without any kind of digital intervention and without the addition of glazes.

A genuinely unique product in its technical and aesthetic make-up.

Crush is created in 2 structural versions, a neutral base and a textured one, and in 4 colours (white, grey, dark grey and greige).

It comes in 4 sizes 120x120, 60x120 and 60x60 cm and in two surface finishes for dual purpose, in both an internal as well as an outdoor context.

Crush is **100% GUARANTEED**: the seal of guarantee on the Leonardo products - Icon, Overcome, Endless, Attitude - for the design of rooms and surfaces requiring maximum stability and durability.

Because Leonardo is **Built to Last**: *beyond time and physical space*.

Il termine *Crush* significa letteralmente schiacciare, frantumare.

Un concetto che descrive perfettamente il processo tecnologico e industriale dei prodotti Leonardo, ottenuti con la miscelazione di materie prime senza alcun tipo di intervento digitale e senza l'aggiunta di smalti.

Un prodotto realmente unico, nella sua componente tecnica ed estetica.

Crush è realizzato in 2 versioni di struttura, un fondo neutro ed uno texturizzato, e in 4 colori (bianco, grigio, grigio scuro e greige).

È disponibile nei formati 120x120, 60x120 e 60x60 cm e in due finiture superficiali per un duplice utilizzo, sia in interno che in contesti outdoor.

Crush è **100% GUARANTEED**: il sigillo di garanzia dei prodotti Leonardo - Icon, Overcome, Endless, Attitude - per la progettazione di ambienti e superfici che richiedono la massima stabilità e durevolezza.

Perché Leonardo è **Built to Last**: oltre il tempo e oltre lo spazio fisico.



CRUSH  
white **W**



**CRUSH**  
white **W**

Floor  
Pavimento  
**CRUSHQ 120W RM**  
Walls and staircase  
Pareti e scala  
**CRUSH 120W RM**  
**CRUSH G120W**

---









LEONARDO 100% GUARANTEED

CRUSH  
grey **G**

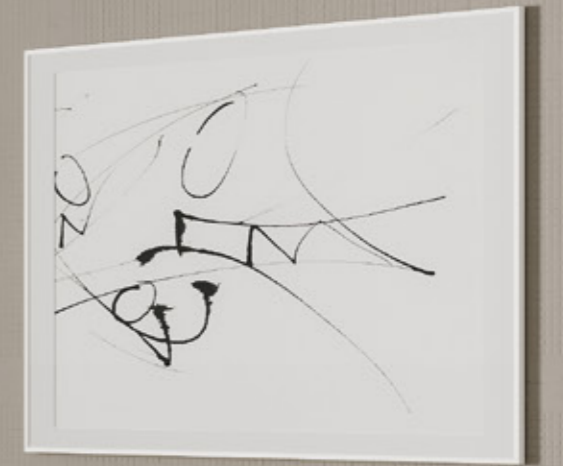
Floor  
Pavimento

**CRUSH 120G RM**

Right wall  
Parete destra

**CRUSHQ 120G RM**





**CRUSH**  
greige **GB**



LEONARDO 100% GUARANTEED

CRUSH  
greige **GB**

Floor and walls  
Pavimento e pareti

**CRUSH 120GB RM**

Right wall  
Parete destra

**CRUSHQ 120GB RM**





**CRUSH**  
dark grey **DG**



**CRUSH** DG  
dark grey

Floor and walls  
Pavimento e pareti

**CRUSH 120DG RM**

Bench  
Panca

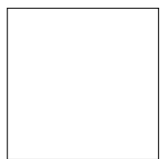
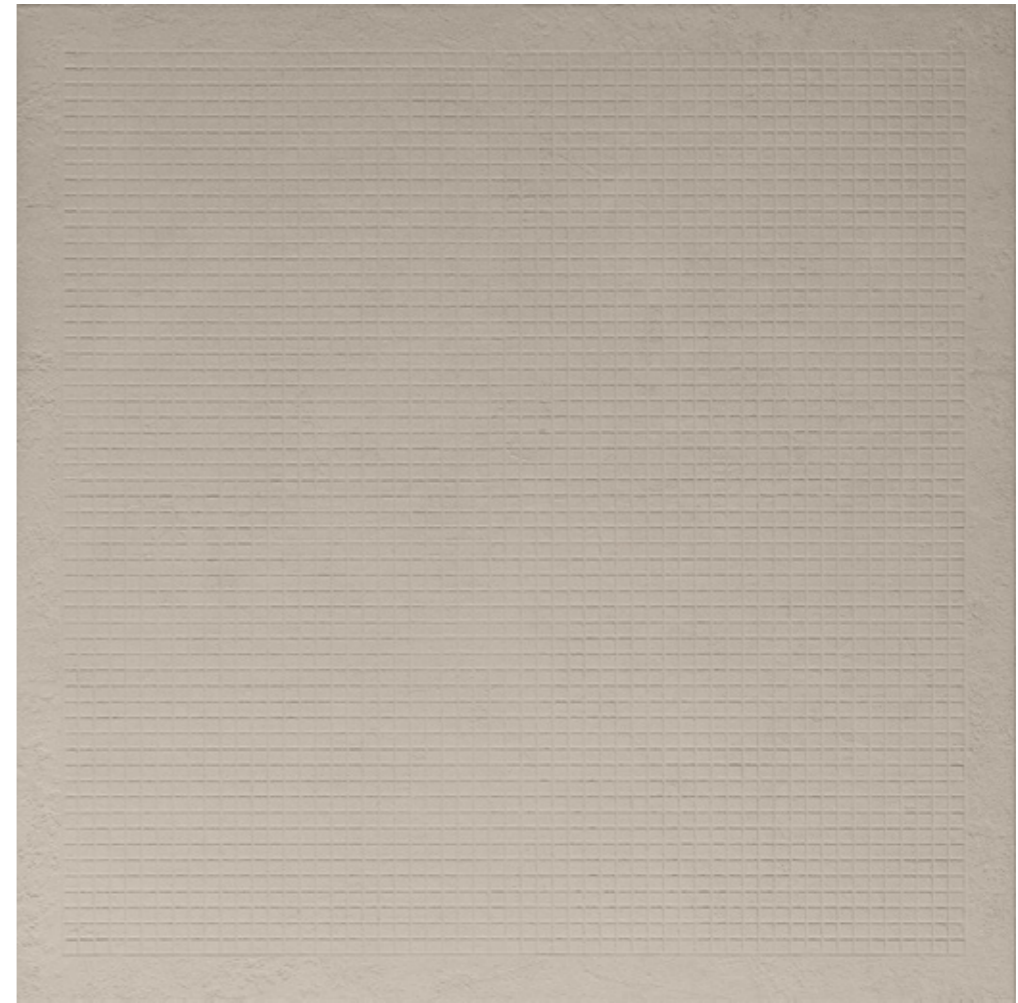
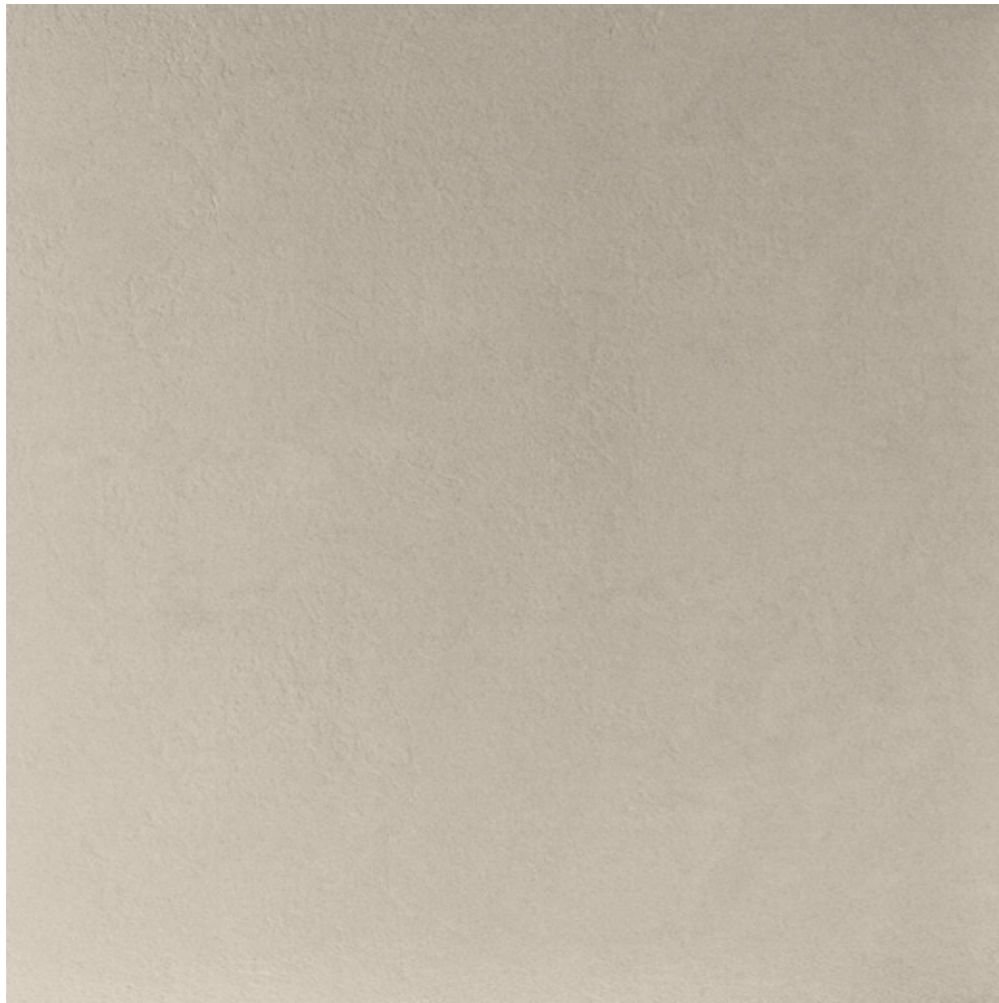
**CRUSH 120W RM**







**CRUSH**  
greige **GB**



**120x120**  
48"x48"



**60x120**  
24"x48"



**60x60**  
24"x24"



**30x30**  
12"x12"



**120x120**  
48"x48"



CRUSH 120GB RM

CRUSH 12GB RM

CRUSH 60GB RM

MK.CRUSH 30GB



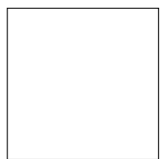
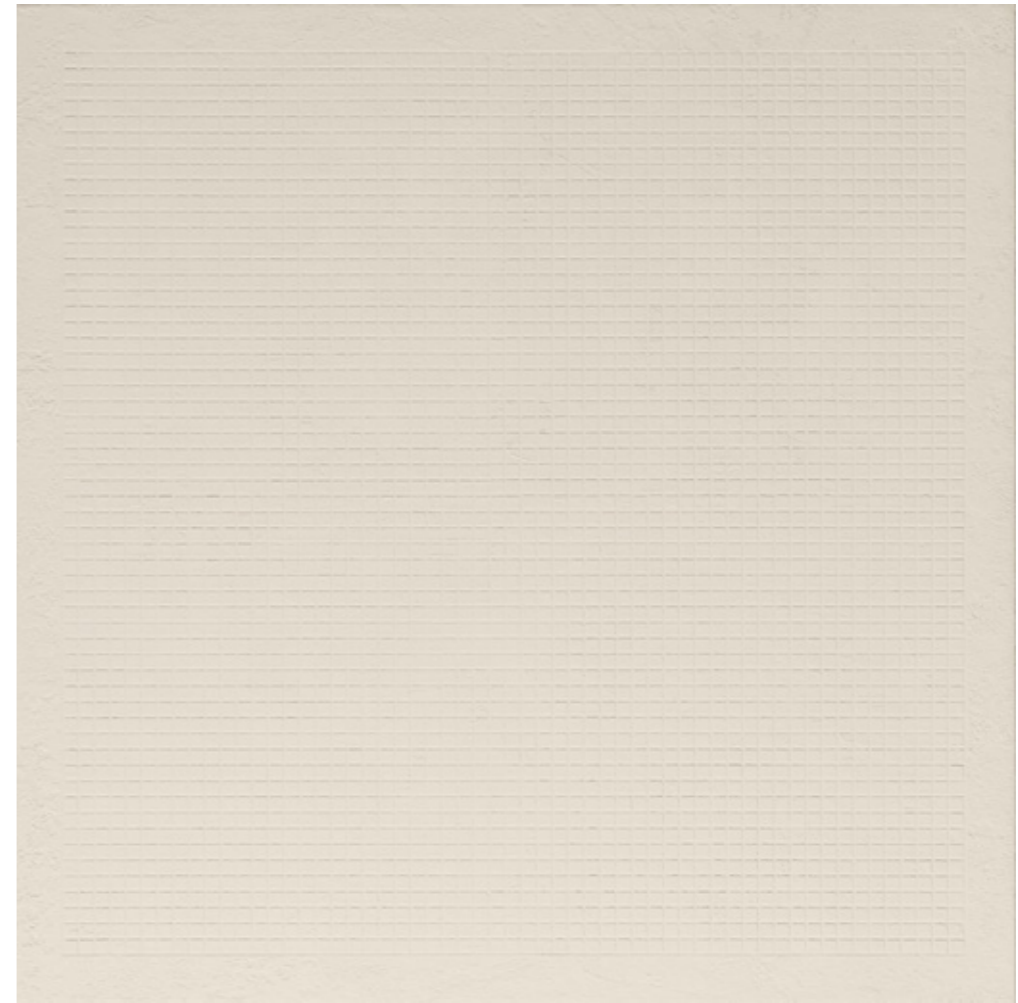
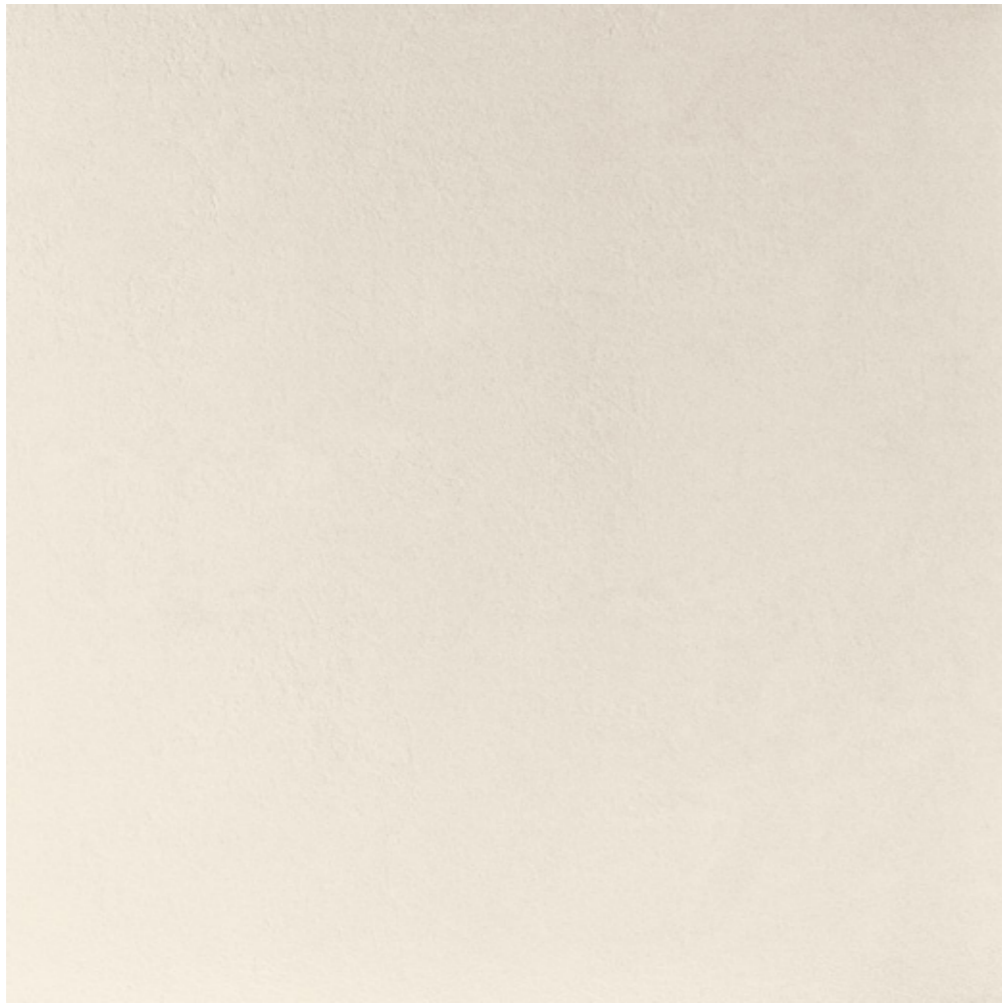
CRUSH R120GB RM

CRUSH R60GB RM



CRUSHQ 120GB RM

**CRUSH**  
white **W**



**120x120**  
48"x48"



**60x120**  
24"x48"



**60x60**  
24"x24"



**30x30**  
12"x12"



**120x120**  
48"x48"



CRUSH 120W RM

CRUSH 12W RM

CRUSH 60W RM

MK.CRUSH 30W



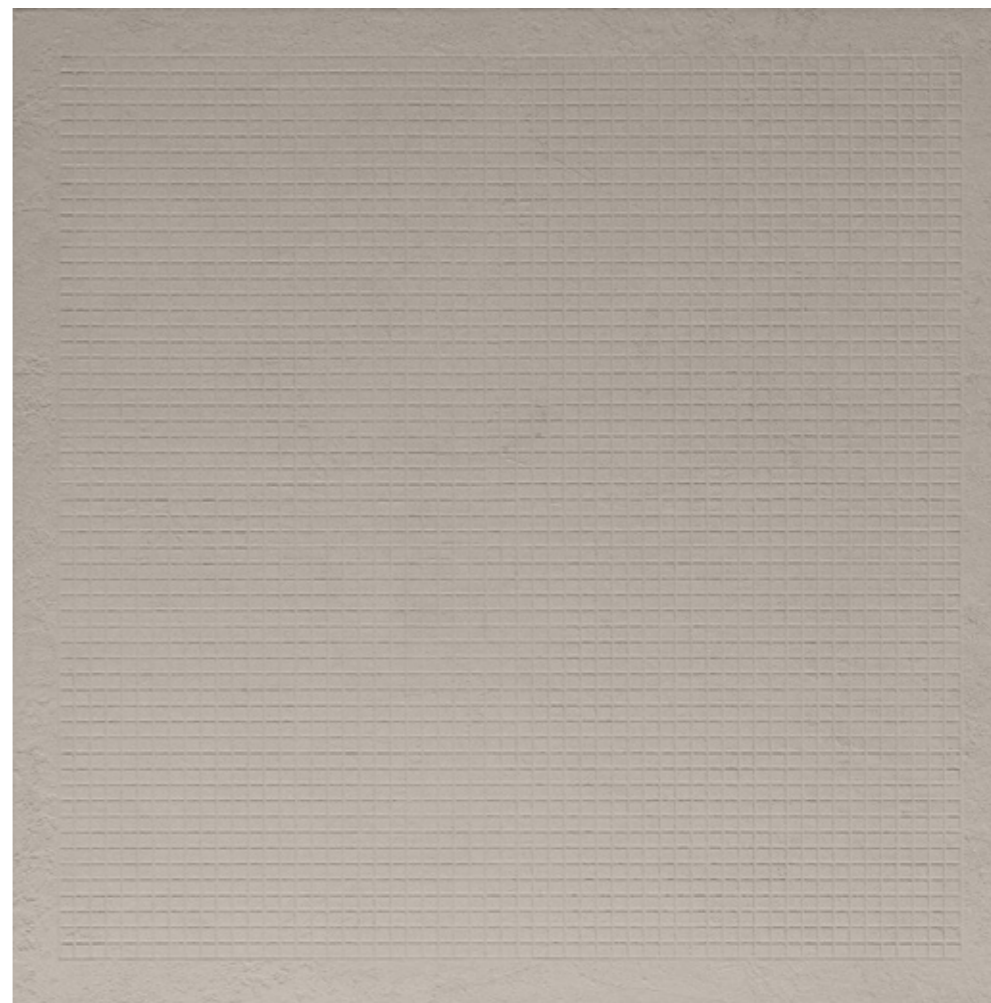
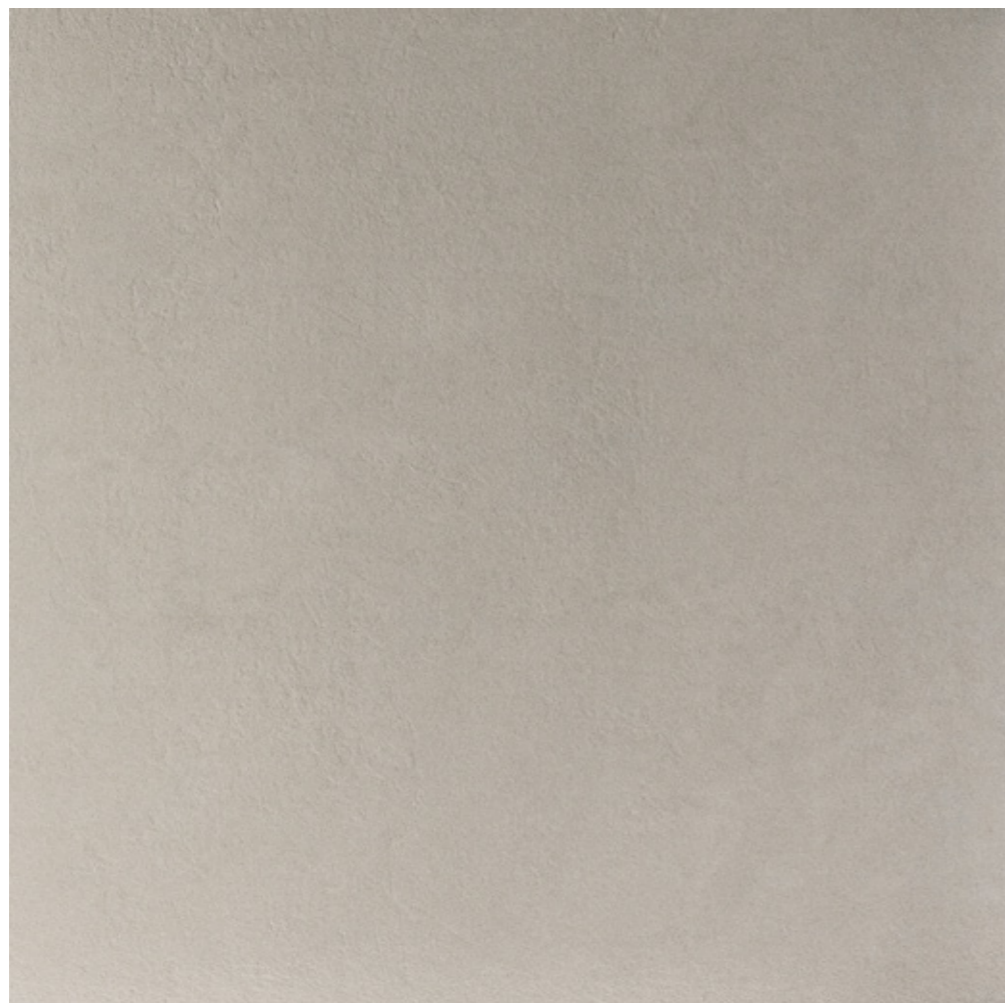
CRUSH R120W RM

CRUSH R60W RM

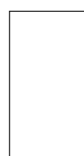


CRUSHQ 120W RM

**CRUSH**  
grey **G**



**120x120**  
48"x48"



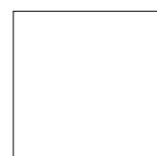
**60x120**  
24"x48"



**60x60**  
24"x24"



**30x30**  
12"x12"



**120x120**  
48"x48"



CRUSH 120G RM

CRUSH 12G RM

CRUSH 60G RM

MK.CRUSH 30G



CRUSH R120G RM

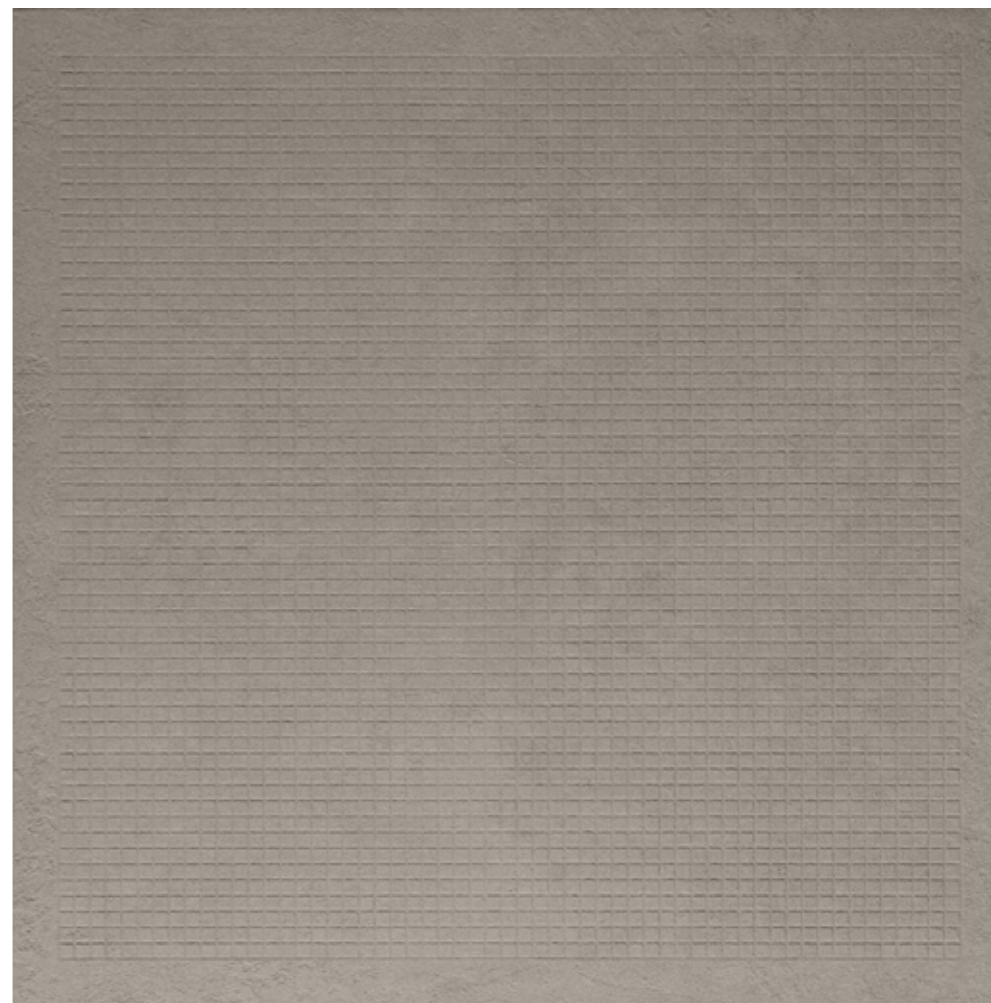
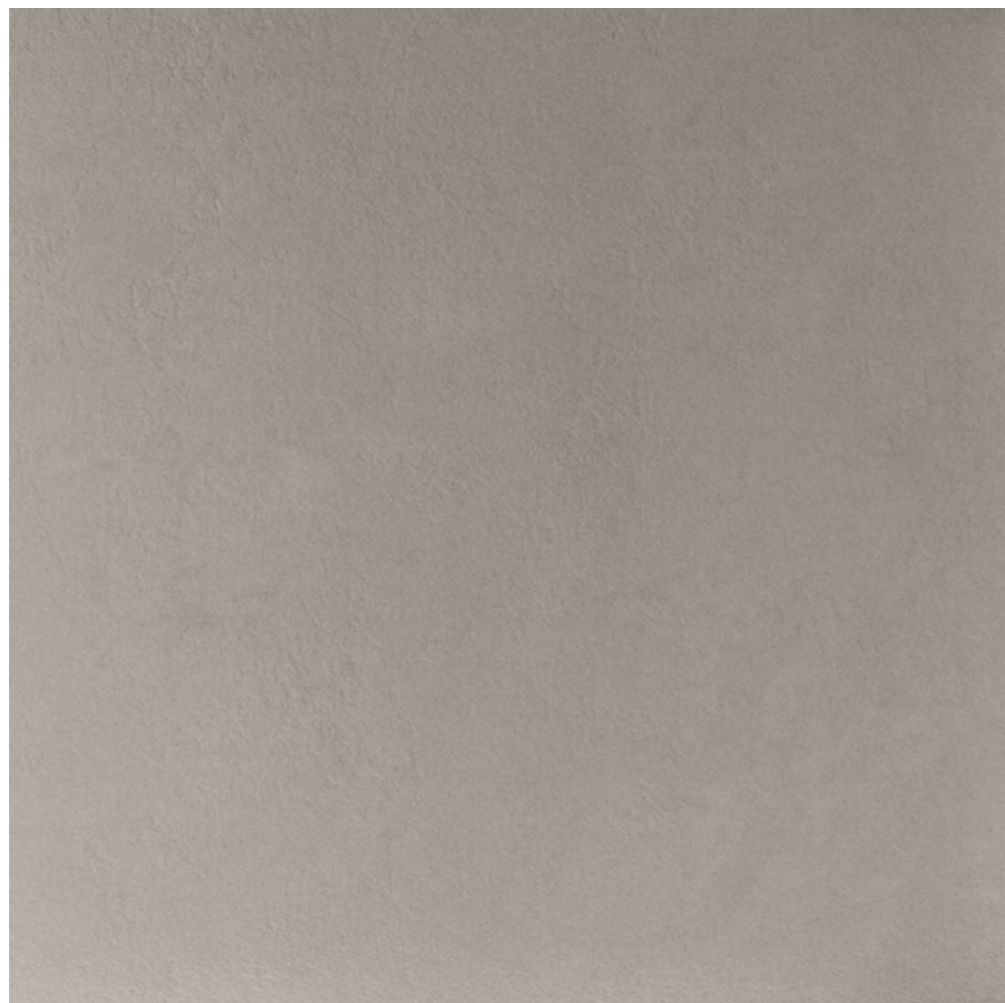
CRUSH R60G RM



CRUSHQ 120G RM

**CRUSH**  
dark grey

DG



**120x120**  
48"x48"



**60x120**  
24"x48"



**60x60**  
24"x24"



**30x30**  
12"x12"



**120x120**  
48"x48"



CRUSH 120DG RM

CRUSH 12DG RM

CRUSH 60DG RM

MK.CRUSH 30DG



CRUSH R120DG RM

CRUSH R60DG RM



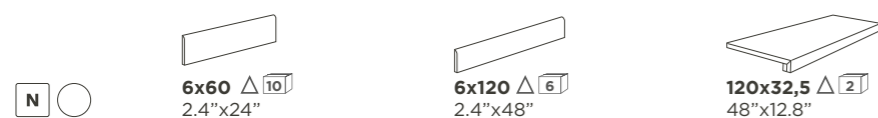
CRUSHQ 120DG RM

LEONARDO

THROUGH-BODY PORCELAIN TILE  
GRES PORCELLANATO A TUTTA MASSA



TRIMS  
PEZZI SPECIALI



	6x60 2.4"x24"	6x120 2.4"x48"	120x32,5 48"x12.8"
<b>CRUSH GB</b>	CRUSH BT60GB	CRUSH BT120GB	CRUSH G120GB
<b>CRUSH W</b>	CRUSH BT60W	CRUSH BT120W	CRUSH G120W
<b>CRUSH G</b>	CRUSH BT60G	CRUSH BT120G	CRUSH G120G
<b>CRUSH DG</b>	CRUSH BT60DG	CRUSH BT120DG	CRUSH G120DG

PACKING  
IMBALLI

NOMINAL SIZE FORMATO NOMINALE	EDGE BORDO	THICKNESS SPESSORE	BOX			PALLET		
			PCS/BOX PZ/BOX	SM/BOX MQ/BOX	KG/BOX KG/BOX	BOX/PALLET BOXES/PALLET	MQ/PALLET SM/PALLET	KG/PALLET KG/PALLET
<b>120x120</b> / 48"x48"	rectified	10,5	1	1,44	35,93	36	51,84	1313,60
<b>60x120</b> - 24"x48"	rectified	10,5	2	1,44	36,55	27	38,88	1006,85
<b>60x60</b> - 24"x24"	rectified	10,5	3	1,08	26,50	32	34,56	868,00
<b>30x30 MOSAICO</b> - 12"x12"	rectified	10,5	6	0,54	12,38	48	25,92	614,24

ART.	DIN 51130 (R)	DIN 51097 (A+B+C)	BCR REP. CEC 6/81		DM 14/6/89 N.236		PENDULUM TEST BS (INGLESE)	PENDULUM TEST AS/NXS 4856:2004 (AUSTRALIANO)	PENDULUM TEST UNE ENV 12633:2003 (SPAGNOLO)	BOT 3000 (DCOF)
			g.a.	g.b.	c.a.	g.b.				
<b>CRUSH</b>	R10	A+B	> 0,4	> 0,4	> 0,4	> 0,4	> 25	> 25	1	> 0.42
<b>CRUSH R</b>	R11	B+C	> 0,4	> 0,4	> 0,4	> 0,4	> 36	> 45	3	> 0.42



EVOLUTIONSTILE

leonardoceramica.it



A brand of  
Cooperativa Ceramica d'Imola S.c.

Via V. Veneto, 13  
40026 Imola (BO) Italia  
Tel. +39 0542 601601  
Fax +39 0542 31749

