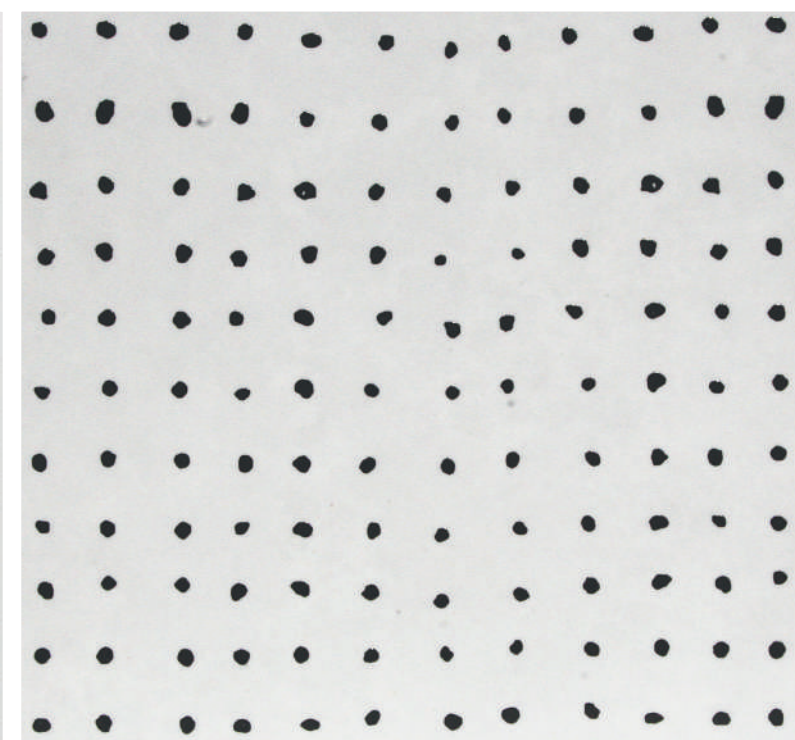
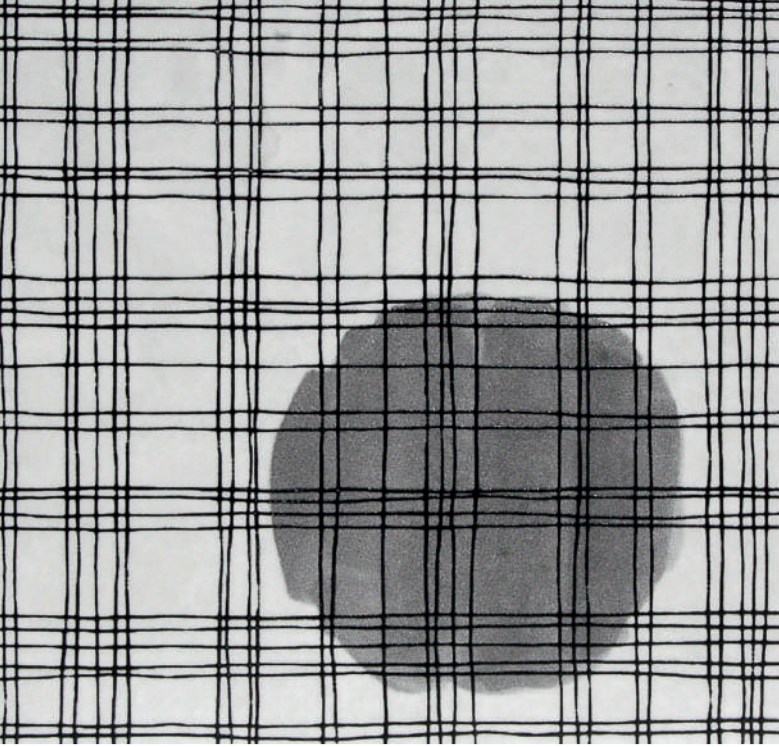
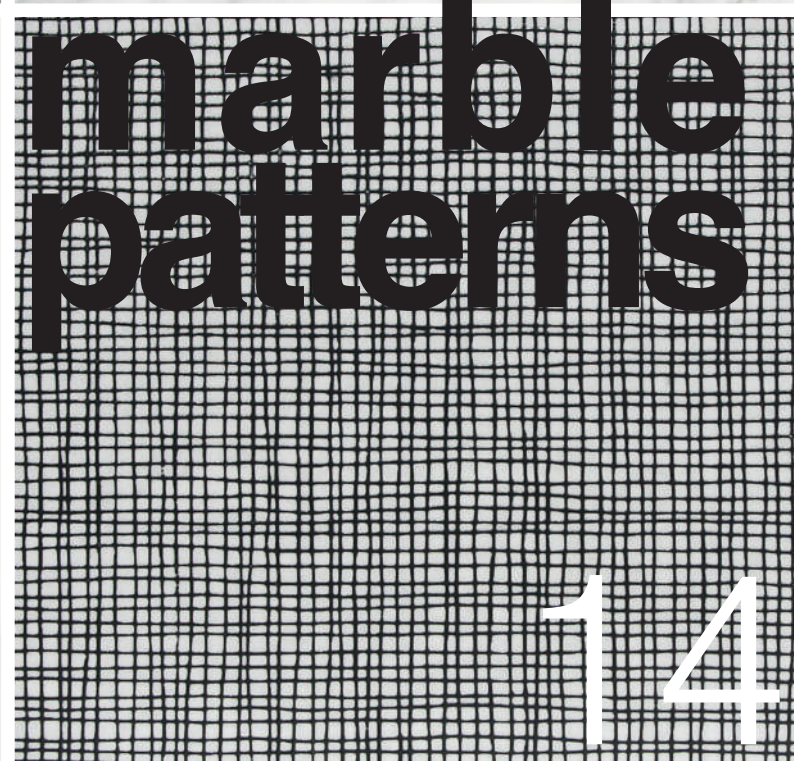
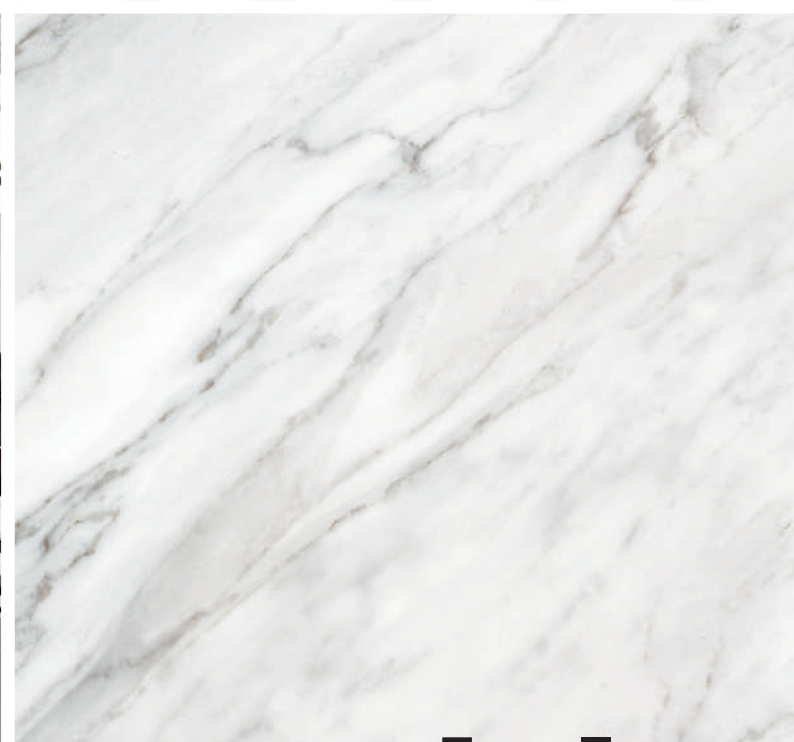
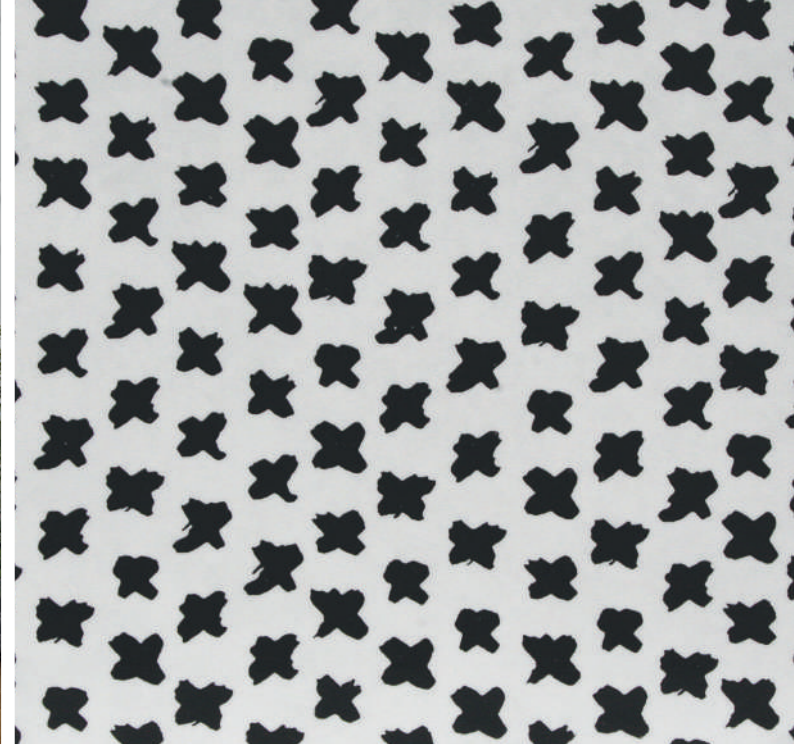


stone
marble

The Classic alongside the Modern.
With Stonemarble collection, we aimed to
bring together the beauty of a classic like
Carrara marble with the fresh, innovative
and revolutionary style of patterns decors.
A unique interpretation, never seen before.
Terratinta style.





**60x60/ 30x60/ 30x30/ 15x15/
5x5 mosaic, marble patterns,**
three finishes: a complete project.
Satin finish: a classic and soft one.
Suitable for floors and walls in resi-
dential and light commercial traffic.
Polished finish: shiny, like a mirror.
Suitable for floors and walls, only
for residential use.
Silk finish: so smooth, looking like
a real marble. Only for indoor wall
cladding.





€10,5

**stone
marble** *white*



60x60 polished









60x60 satin

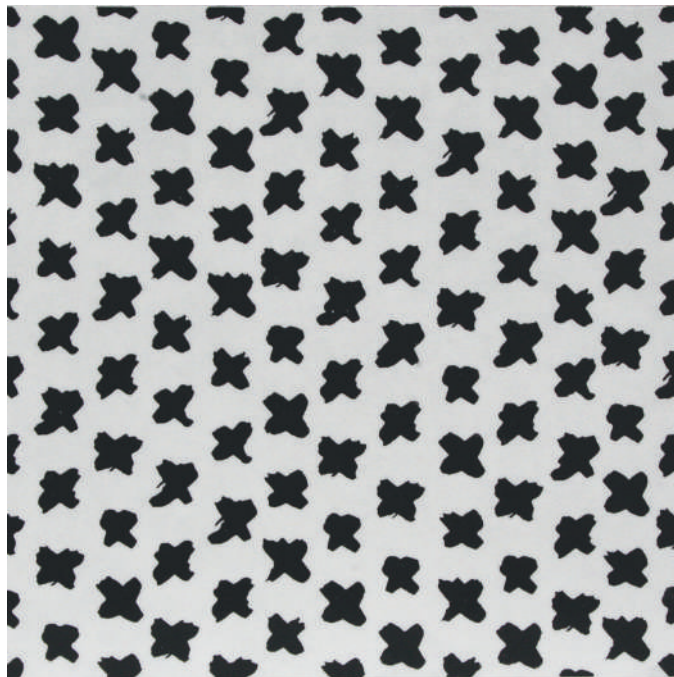


marble patterns

15x15 cm



aksel
01

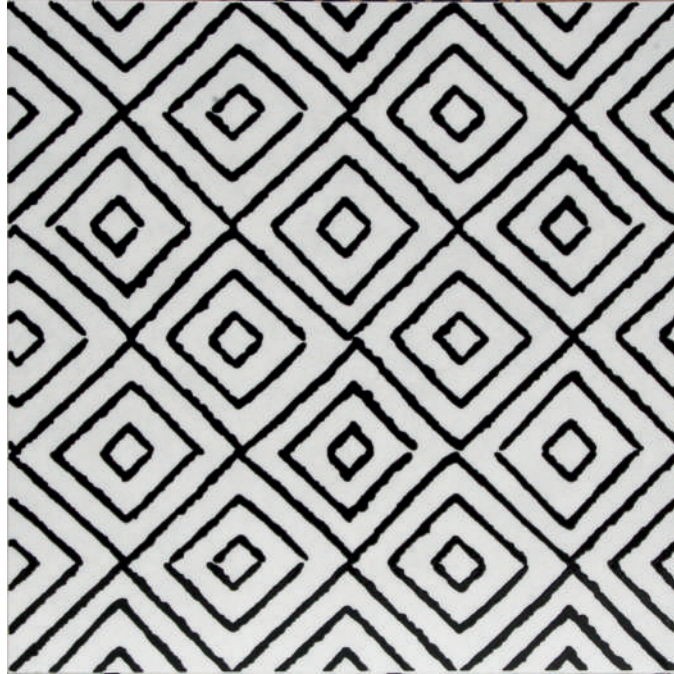


charlie
02

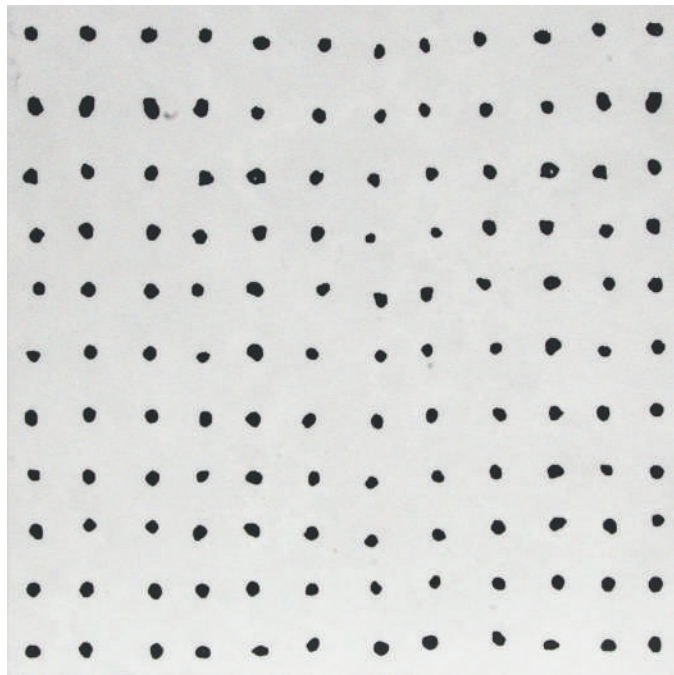
You can choose:

-a box with **1 of the 12 available patterns** (12 pcs/box - 0,27 sq.mt.)

-a box with the **12 patterns mix** (12 pcs/box - 0,27 sq.mt.)



erik
03



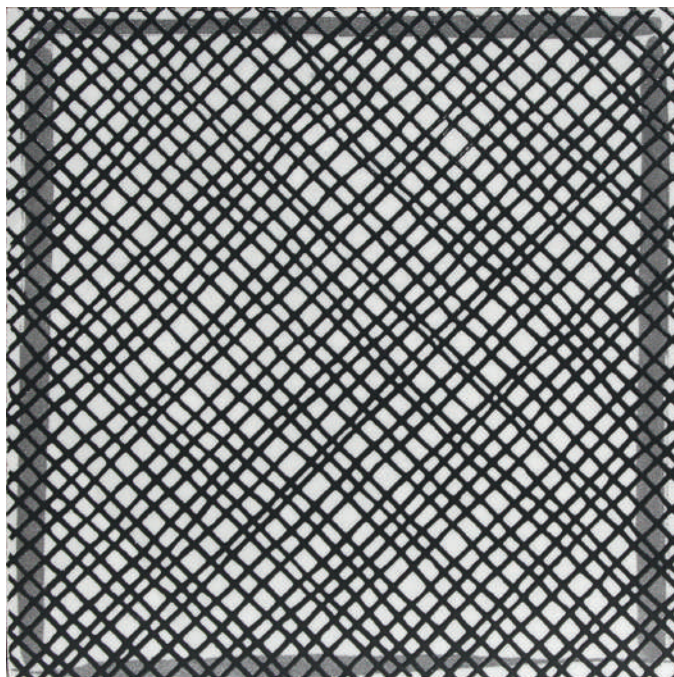
gabriel
04



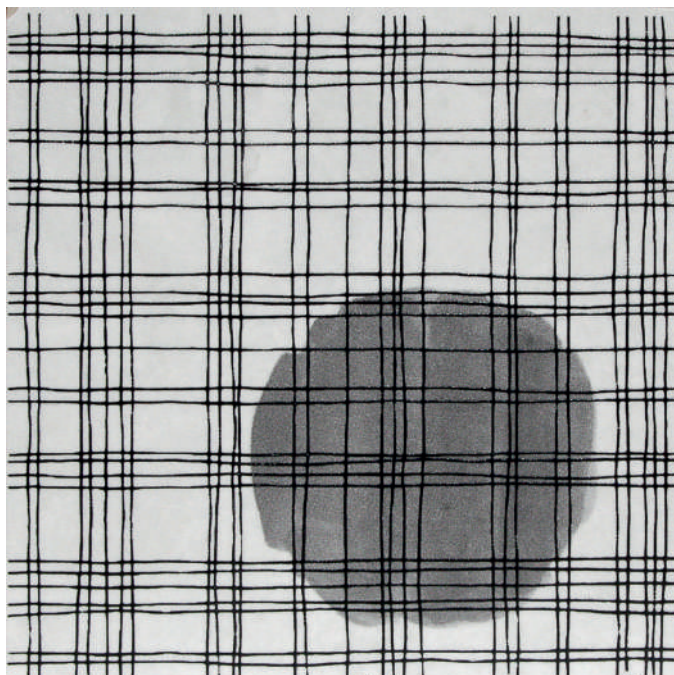
hugo
05



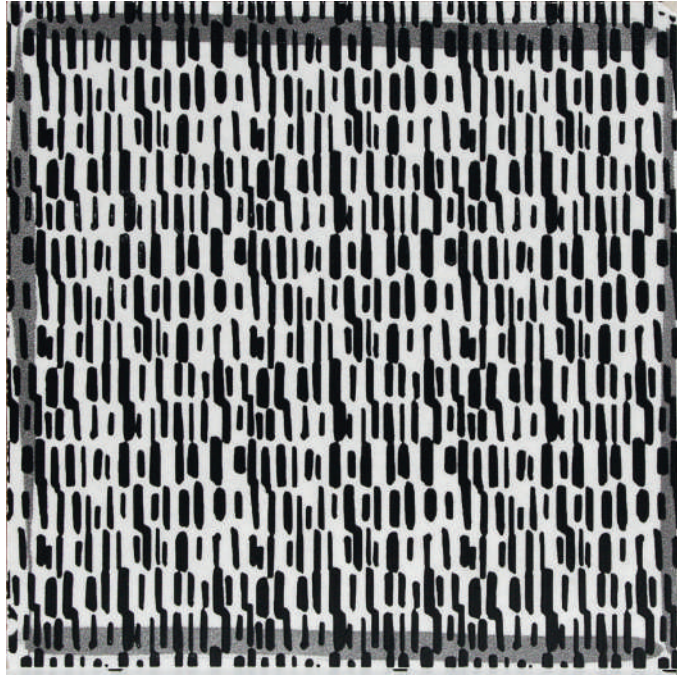
jakob
06



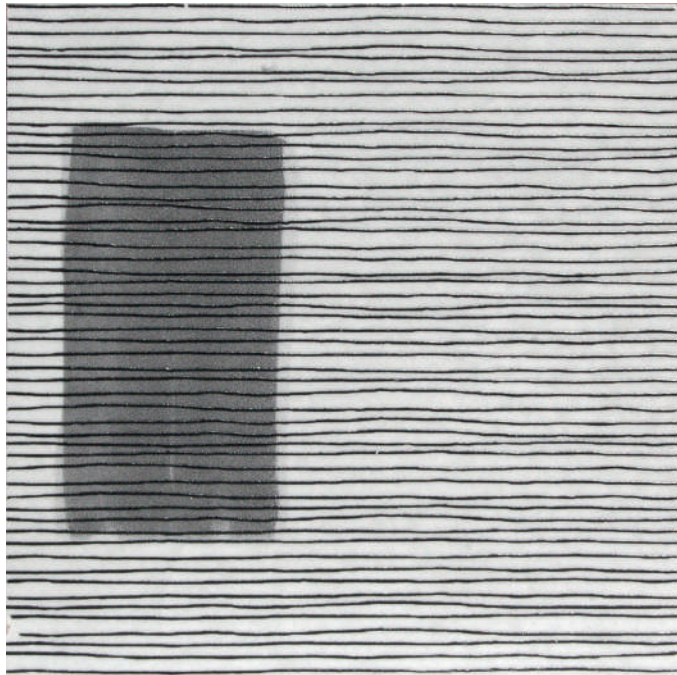
lucas
07



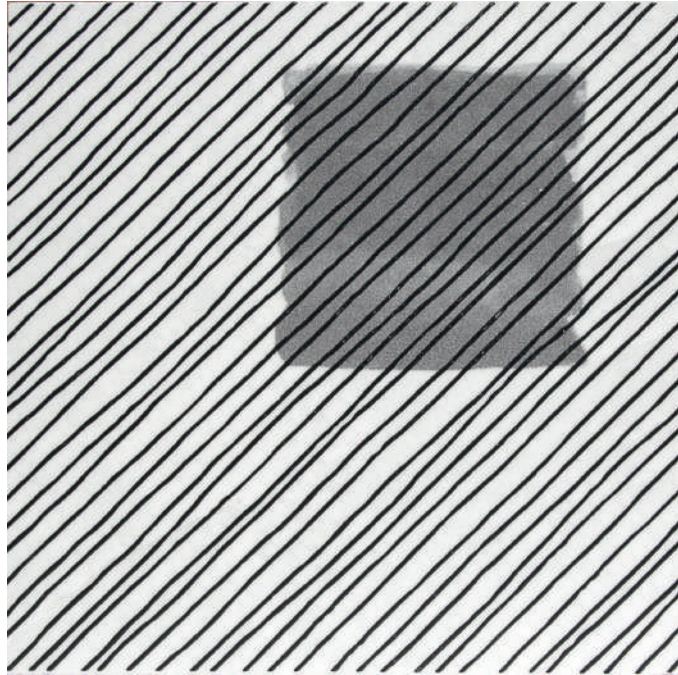
mathias
08



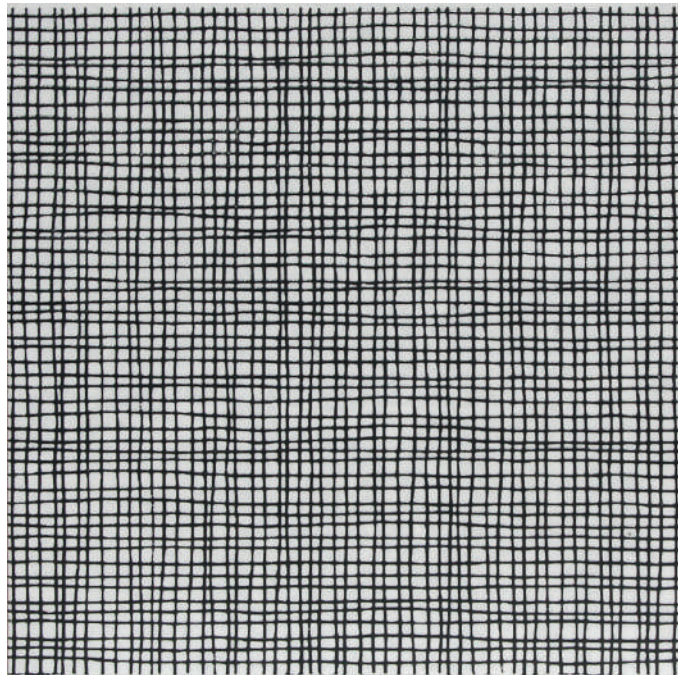
noah
09



ruben
10



theo
11



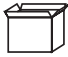


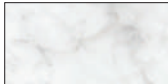



viggo
12



30x60 silk / 15x15 silk /
15x15 marble patterns mix



codes & packaging

| | | |  | | |  | | |
|--|--|--|---|--------|-------|---|--------|-------|
| | | | PIECES | SQ.MT. | KG | BOXES | SQ.MT. | KG |
|  | satın polished | TTSMWH60SA TTSMWH60P | 3 | 1,08 | 25,75 | 40 | 43,20 | 1.050 |
| 60x60 | | | | | | | | |
|  | satın polished silk | TTSMWH36SA TTSMWH36P TTSMWH36SI | 5 | 0,90 | 21,50 | 48 | 43,20 | 1.052 |
| 30x60 | | | | | | | | |
|  | satın | TTSMWH30SA | 11 | 1 | 22 | 48 | 48 | 1.076 |
| 30x30 | | | | | | | | |
|  | satın silk | TTSMWH15SA TTSMWH15SI | 44 | 1 | 23 | 48 | 48 | 1.124 |
| 15x15 | | | | | | | | |
|  | satın | | | | | | | |
| 15x15 | | | | | | | | |
| marble patterns | aksel charlie erik gabriel hugo jakob lucas mathias noah ruben theo viggo | TTSMWH01AK TTSMWH02CH TTSMWH03ER TTSMWH04GA TTSMWH05HU TTSMWH06JA TTSMWH07LU TTSMWH08MA TTSMWH09NO TTSMWH10RU TTSMWH11TH TTSMWH12VI | 12 | 0,27 | 6 | 64 | 17,28 | 404 |
| | marble patterns box mix | TTSMWHMIX15 | 12 | 0,27 | 6 | 64 | 17,28 | 404 |

| | | |  | | |  | | |
|--|-----------------|------------|--|--------|-------|--|--------|-----|
| | | | PIECES | SQ.MT. | KG | BOXES | SQ.MT. | KG |
|  30x30 mosaic (chip 5x5) | satın | TTSMWHM5SA | | | | | | |
| | polished | TTSMWHM5P | 11 | 1 | 20 | 30 | 30 | 620 |
| | silk | TTSMWHM5SI | | | | | | |
|  skirting 5x60 | satın | TTSMWHBSA | 12 | 7,20ml | 8,50 | - | - | - |
|  step 30x60 | satın | TTSMWHGSA | 6 | 1,08 | 24,80 | - | - | - |

Terratinta Ceramiche reserves the right to modify packaging details on individual orders or on particular colours and/or sizes.

technical features

TECHNICAL FEATURES GLAZED PORCELAIN STONEWARE

CONFORMING TO EUROPEAN STANDARDS EN 14411 ISO 13006 APP. G (GRUPPO BIA GL CON E_B ≤ 0,5%)

CARATTERISTICHE TECNICHE GRÈS PORCELLANATO SMALTATO Conformi a Norme Europee EN 14411 ISO 13006 App. G (Gruppo Bia GL con E_B ≤ 0,5%)

TECHNISCHE EIGENSCHAFTEN GLASIERTES FEINSTEINZEUG Gemäß den EUROPÄISCHEN Normen EN 14411 ISO 13006 App. G (Gruppe Bia GL con E_B ≤ 0,5%) FULL BODY COLOURED

CARACTERISTIQUES TECHNIQUES GRÈS CÉRAME ÉMAILLÉ Conformes aux Normes Européennes EN 14411 ISO 13006 App. G (Groupe Bia GL con E_B ≤ 0,5%) ED PORCELAIN STONEWARE

| | TECHNICAL FEATURES CARATTERISTICHE TECNICHE TECHNISCHE DATEN CARACTERISTIQUE TECHNIQUE | TESTING METHOD METODICA DI PROVA PRÜFVERFAHREN NORME D'ESSAIS | REFERENCE STANDARD RIFERIMENTO NORMA STANDARDWERT RÉFÉRENCE NORME | TEST RESULTS VALORE PRODOTTO PRODUKT WERTE VALEUR PRODUIT |
|--|---|--|--|--|
| | Sizes Dimensioni Abmessungen Dimensions | EN ISO 10545-2 | N ₂ 15cm (%) (mm) • Length and width - Lunghezza e larghezza - Länge und Breite - Longueur et largeur ±0,6% ±2,0mm • Thickness - Spessore - Stärke - Epaisseur ±0,5 ±0,5 • Linearity - Rettilinearità spigoli - Kantengeradheit - Rectitude des arêtes ±0,5 ±1,5 • Wedging - Ortogonalità - Rechtwinkligkeit - Orthogonalité ±0,5 ±2,0 • Warpage - Planarità - Ebenföchigkeit - Planéité ±0,5 ±2,0 • Appearance: percentage of acceptable tiles, per lot Aspetto: percentuale di piastrelle accettabili nel lotto Oberflöchenbeschaffenheit: Prozentsatz der Fliesen, die den geforderten 95% min. - Eigenschaften entsprechen Aspect: pourcentage de carreaux acceptables sur la fourniture totale | Compliant Conforme Erfüllt Conforme |
| | Water absorption Assorbimento d'acqua Wasseraufnahme Absorption d'eau | EN ISO 10545-3 | E _B ≤ 0,5% | Compliant Conforme Erfüllt Conforme |
| | Modulus of rupture Resistenza alla flessione Biegezugfestigkeit Résistance à la flexion | EN ISO 10545-4 | Min 35 N/mm ² | Compliant Conforme Erfüllt Conforme |
| | Breaking strenght Carico di rottura Bruchlast Charge de rupture | | sp. > = 7,5 mm: min 1300 N | Compliant Conforme Erfüllt Conforme |
| | Abrasion resistance Resistenza all'abrasione Abriebbeständigkeit Résistance à l'abrasion | EN ISO 10545-7 | classi 0-5 | 5 4 marble patterns |
| | Thermal expansion coefficient Coefficiente di dilatazione termica lineare Wärmeausdehnung Coefficient de dilatation thermique linéaire | EN ISO 10545-8 | *Declared value Valore dichiarato Angegebener Wert Valeur déclaré | ≤ ⁹ MK ⁻¹ |
| | Thermal shock resistance Resistenza agli sbalzi termici Temperaturwechselbeständigkeit Résistance aux écarts de température | EN ISO 10545-9 | *Pass according to iso 10545-1 Test superato in accordo con iso 10545-1 Test ueberstanden nach ISO 10545-1 Pv en accord avec norme en 10545-1 | Resistant Resistente Widerstandsföhig Résistant |
| | Frost resistance Resistenza al gelo Frostbeständigkeit Résistance au gel | EN ISO 10545-12 | *Pass according to iso 10545-1 Test superato in accordo con iso 10545-1 Test ueberstanden nach ISO 10545-1 Pv en accord avec norme en 10545-1 | Resistant Resistente Widerstandsföhig Résistant |
| | Resistance to low concentrations of acids and alkali Resistenza a basse concentrazioni di acidi e alcali Beständigkeit gegen schwachkonzentrierten Säuren und Laugen Résistance à des basses concentrations d'acides et bases | | *Declared value Valore dichiarato Angegebener Wert Valeur déclaré | From GLA to GLB Da GLA a GLB Von GLA bis GLB De GLA jusqu'à GLB |
| | Resistance to high concentrations of acids and alkali Resistenza ad alte concentrazioni di acidi e alcali Beständigkeit gegen starkkonzentrierten Säuren und Laugen Résistance à des hautes concentrations d'acides et bases | EN ISO 10545-13 | *Declared value Valore dichiarato Angegebener Wert Valeur déclaré | From GHA to GHB Da GHA a GHB Von GHA bis GHB De GHA jusqu'à GHB |
| | Resistance to domestic chemicals and additives for swimming pools Resistenza ai prodotti chimici d'uso domestico e agli additivi per piscine Beständigkeit gegen chemischen Haushaltsreiner und Zusatzstoffe für Schwimmbäder Résistance aux produits chimiques d'usage domestique et additifs pour piscines | | GB min. | GB MIN. |
| | Stain resistance of unglazed porcelain Resistenza alle macchie di piastrelle non smaltate Fleckenbeständigkeit von unglasierten Fliesen Résistance aux taches des carreaux non émaillés | EN ISO 10545-14 | *Classe 3 min Gruppe 3 min. Classe 3 min | CLASSE ⁵ |
| | Glaze crazing resistance Determinazione della resistenza al cavillo Widerstand gegen Haarriß von der Glasur Résistance aux taches | EN ISO 10545-11 | Required Richiesta Gefordert Requis | Resistant Resistente Widerstandsföhig Résistant |

* It's advisable to refer to Contract Division for all necessary guidelines to a correct use.
Si raccomanda di consultare Contract Division per le indicazioni necessarie al corretto utilizzo.
Zur korrekten Anwendung wird empfohlen mit unserem Contract Division Kontakt aufzunehmen.
Merci de consulter notre Contract Division pour les indications a un usage correct.



V2 MODERATE

The Polished and Silk finishes are the result of a special mechanical process and can manifest small dots or hollows as well as a non-uniform shine all over the surface. These particularities are to be considered as intrinsic features of the product which give them a more natural appeal.

TERRATINTA
group

Certified



Corporation



DOWNLOAD
AREA

"Stay hungry, stay foolish."

S. Jobs 1955-2011


#notaclassicstory

brand of Terratinta Group Srl SB

// 45, via Viazza Il Tronco
41042 Fiorano Modenese(MO)Italy

T +39 0536911408

W terratintagroup.com

 Terratinta Group

 terratintagroup //

#terratintastyle

